

Hybrid-TG6

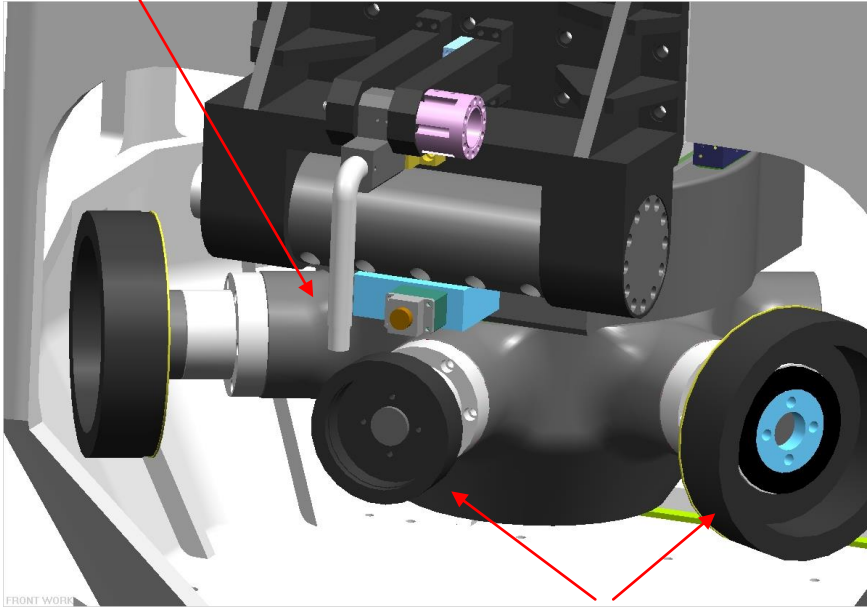
Precise Eroding & Grinding Machine For Tools



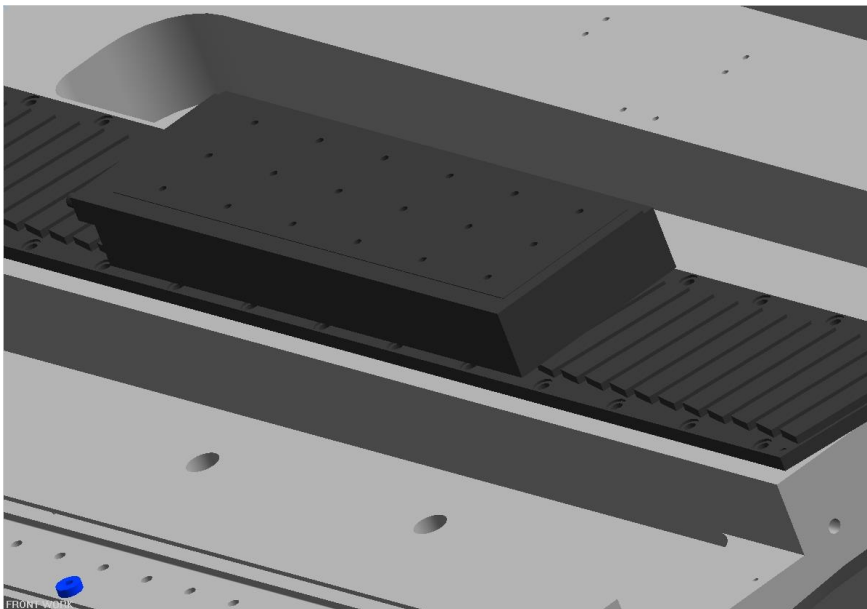
**Purpose : Eroding & grinding indexable inserts made of
HSS, Tungsten carbide, PCBN and PCD**

 **TechMAC Co., Ltd.**
Advanced Precision System

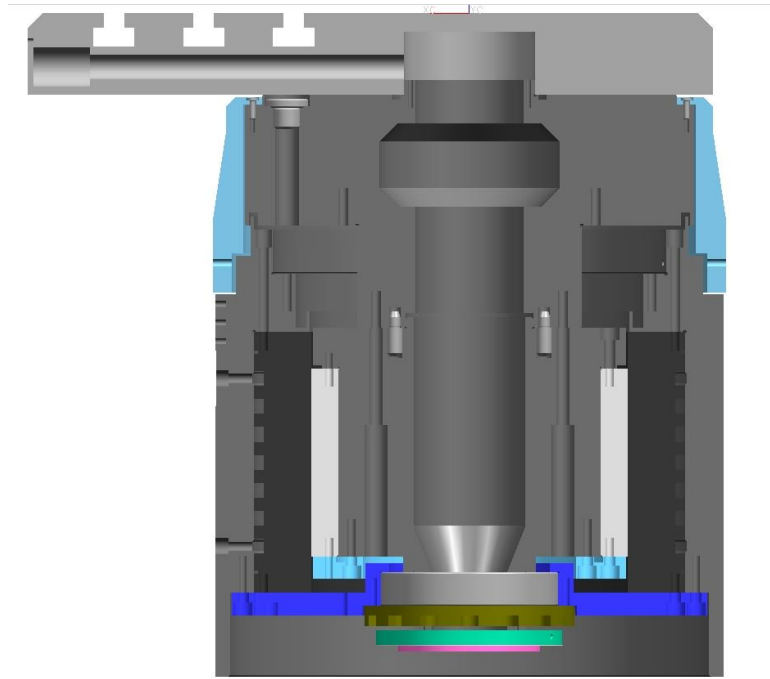
소재 형상측정 및 치수보정을 위한
Touch Probe Measurement System



방전가공용 전극 및 연마휠 장착용
Spindle => Max. 6 Pieces

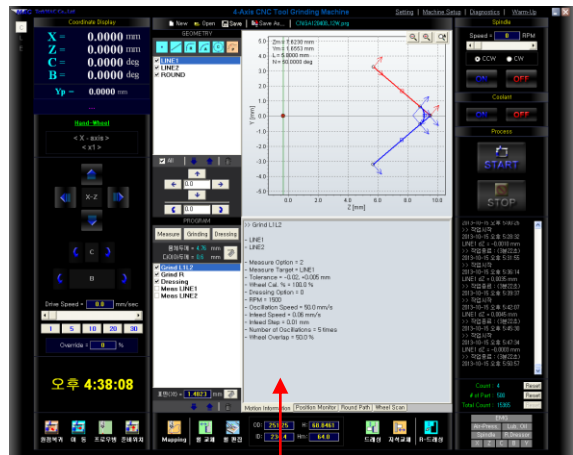
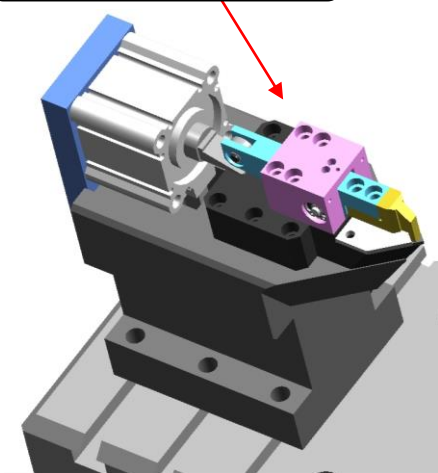


X-Axis, Y-Axis
=> Linear Direct Drive 적용

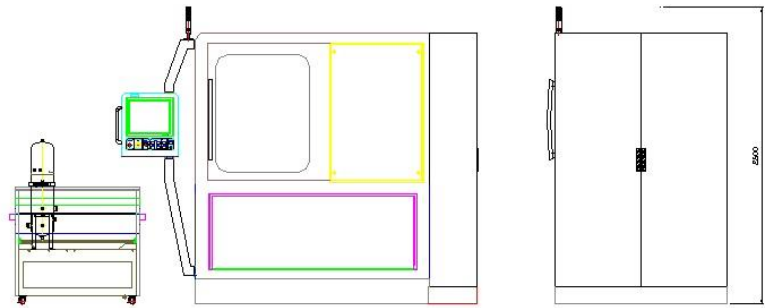
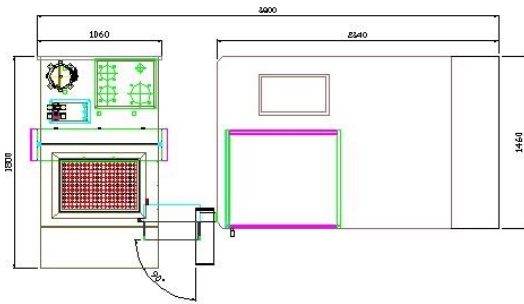
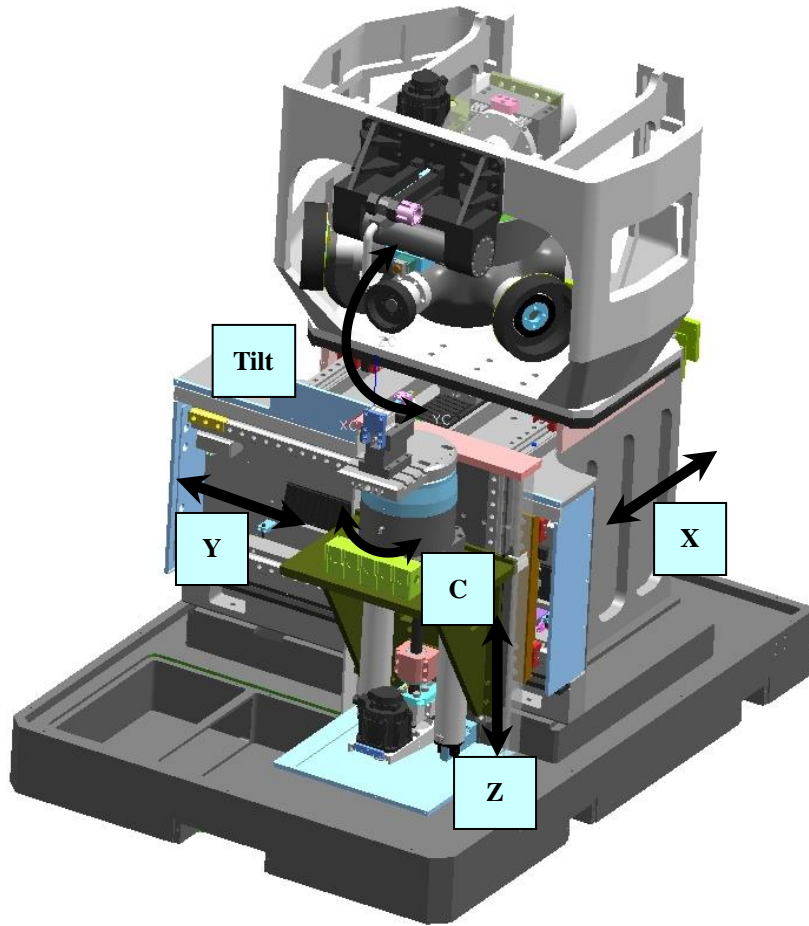


C-Axis => BLDC Drive 및 고강성 고정도 베어링 장착

가공물 고정을 위한
One clamping System



- Geometry(Line, Round, Arc, Circle) 직접입력에 의한 CAD/CAM 통합형 소프트웨어
- 작업리스트에 의한 측정/드레싱/가공조건 관리 및 순차제어 프로그래밍
- 편리한 가공치수 및 형상 보정 기능
- 소재 설치상태와 입력된 Geometry를 일치시키기 위한 Mapping 기능



< Machine Layout >

Technical Data

	X axis	Y axis	Z axis	C axis	Tilting axis
Speed	50 mm/s	50 mm/s	50 deg/s	50 deg/s	50 mm/s
Range	300 mm	420 mm	240 mm	-125 ~ 125 deg	10 ~ -20 deg
Resolution	0.0001 mm	0.0001 mm	0.0001 mm	0.0001 deg	0.01 deg

Spindle Motor	
Motor power	5.0 kW
Eroding & Grinding Spindle	
Spindle	3 ~ 6 Pieces
Wheel diameter	Max. 250 mm
Rotation	Max. 3000 rpm
Applied Materials	
HSS, Tungsten, Carbide, PCBN, PCD	
Dimensions	
Machine	W2340 x D1460 x H2500
Coolant unit	W1800 x D1060 x H1100
Weights	
Machine	Approx. 8000 kg
Coolant Tank	Max. 400Liters
Utilities	
Electrical connection	3x220V 50/60Hz
Power consumption	30 KVA
Required air pressure	5 bar
Ambient temperature	10 ~ 30°C
Humidity	30 ~ 95%