

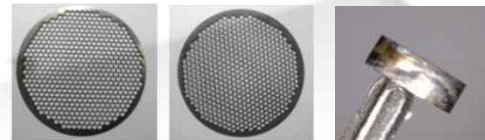
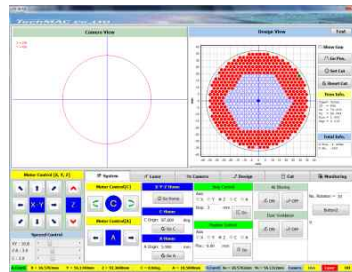
Laser ID/OD Machining System

Features

- : IR 20W Fiber LASER
- : High Stiffness/Fine Resolution
- : Optical Tilting Axis
- : XYZ Axes Precision Control
- : Optimal MC for Perpendicular Cutting

Application

- Laser Micro Machining
- ID/OD Perpendicular Cutting
- PCD Cutting



Specifications

Motorized Stage	Stroke	X axis	180mm
		Y axis	180mm
		Z axis	100mm
	Resolution	Linear Motion	0.0001mm
LASER Source	Maintenance Cycle		12 months
	Wavelength		1064nm
	Average Power		20W
	Pulse Energy		1mJ
Security Feature	Cooling		Ensuring a safe temperature
	Security Window		Laser shield with safety locks
Dimension			1600x1000x1600mm
Options		Scanning Solutions	
		Longer Stroke	
		BMO(Beam Manipulation Optics)	
		Power Detection/Monitoring	



TechMAC Co., Ltd.
Advanced Precision System